

The Corvette Anthology

1999



[The Menu Items](#)

[The Information Buttons](#)

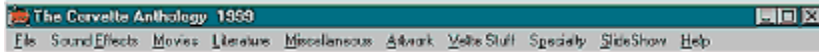
[The Photographs](#)

[The Year Buttons](#)

[The Slide Show](#)

Help file generated by VB HelpWriter.

The Menu Items



File

Sound Effects

Displays the *Play Sound Effects screen*. Here you can sample a number of different Corvette and automobile related sound effects.

Movies

Displays the *Movies screen*. Here you can view a number of different Corvette related videos and TV commercials.

If you experience any difficulties playing any or all of the movies, you may need to install the latest video drivers. These are usually included with the later versions of Windows '95 and NT but may be downloaded from the Intel website (<http://www.intel.com/ial/indeo/video/driver.htm>) as self installing file:iv5play.exe. Follow their instructions. You may also install these drivers from this software by choosing **Install Intel Indeo® Software** from the File menu option.

Literature

Miscellaneous

Artwork

Corvette Stuff

Here you'll find various Corvette related "stuff" that you should find interesting.

Specialty

SlideShow

Help

The Information Buttons



Description

This button displays a brief narrative describing the selected model year Corvette.

Options

This button displays a list of options that were available for the Corvette of the chosen year. Listed are the options, the number that were ordered and the list prices.

Statistics

Lists the statistics such as engines, cubic inches and horse power ratings that were available for the selected model year, weight, height, length etc. for the selected model year.

Colors

Shows the exterior colors that could be chosen for the selected model year.

Script

Displays a the script which was generally associated with the selected model year Corvette.

Rear Emblem

Displays the emblem that adorned the Corvette rear fascia, fuel door or trunk lid for the selected model year.

Side Emblem

Displays the emblem that adorned the side fender or cove for the selected model year.

Nose Emblem

Displays the emblem that adorned the nose of the Corvette hood for the selected model year.

Clip Art

Displays a clip art drawing depicting the selected model year Corvette.

Ad

Displays an advertisement that was used to market the Corvette during the selected model year. Click on the Ad to "Zoom" in and out for a better view. Click the right mouse button to stop displaying the ad.

The Year Buttons



1953	54	55	56	57	58	59	60	61	62	63	64	65	66	67	68	69	70	71	72	73	74	75	76	77
1978	79	80	81	82	84	85	86	87	88	89	90	91	92	93	94	95	96	97	98	99	Exit			

Select any button to see pictures of that year's Corvette. Some years feature interiors, engines or other interesting aspects of the Corvette. *

Note that the different colors used for the buttons reflect the five generations of Corvettes (C1 - C5)

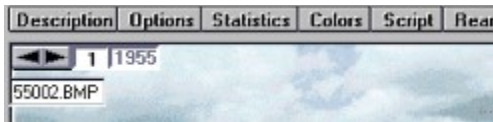
Blue	C1	1953-1962
Red	C2	1963-1967
Green	C3	1968-1982
Purple	C4	1984-1996
Black	C5	1997 -

*** Note: Special keyboard and mouse navigation techniques**

The "<" and ">" keys will step forward and backward through the photos for a given year. To advance one year at a time, depress the **Space** bar or click the **left mouse** button on a photograph. To go backwards one year at a time, depress the **Ctrl** key.

Help file generated by VB HelpWriter.

The Photographs



Selection Arrows

Click on the left or right arrows to step backwards or forwards through the set of Corvette pictures available for the selected model year. *

Photo Number

Displays the number of the picture within the set of pictures for the selected model year.

Year

Shows the selected model year.

* Note: *Special keyboard and mouse navigation techniques*

The "<" and ">" keys will step forward and backward through the photos for a given year.

To advance one year at a time, depress the **Space bar** or click the **left mouse button** on a photograph.

To go backwards one year at a time, depress the **Ctrl** key.

To activate the **Corvette Anthology** Screen Saver Photo Selection form, click the **right mouse button** on a photo that is displayed on the main screen.

Help file generated by VB HelpWriter.

The Slide Show



The SlideShow is a nifty feature of the **Corvette Anthology**. It plays just like a cassette or music CD player. You can step through the photos, forwards or backwards, one at a time, jump to the middle, beginning or by 10 in either direction. Of course, you can just hit "play" and enjoy the show at the selected time lapse. When you enter the SlideShow screen, the default setting of 1 second interval is effect. The show is presented in sequence by year, forward or backward.



Resets the Slide Show to the first image



Resets the Slide Show to the middle of the presentation



Select which show you would like to enjoy, photographs, scripts and emblems or clip art.



Shows the model year of the 'Vette that is displayed.



Manually step backwards or forwards through the slides, one at a time.



Places the slide show in autoplay mode.



Pauses the show.



Manually jumps backwards or forwards by 10 slides. A quick way to search for a given model or year.



Halts the SlideShow and returns you to main screen.



Use to select the time delay, 1 to 60 seconds, between slides when in autoplay mode.

*** Note: Special keyboard navigation techniques**

The "<" and ">" keys will step forward and backward through the photos, insignia or clip art for a given year.

To advance one year at a time, depress the Space bar or click the left mouse button on a photograph.

Help file generated by VB HelpWriter.

Corvette Articles

A set of informative and entertaining essays whose subject is, of course, the Corvette.

Commemorating the C4 and My Love of Corvettes: An article by by Jeff Rios recounting his early yearning to own a Corvette to his dream fulfilled.

Hand Signals and Other Greetings: An article by by Barbara Spear which was originally published in *Keepin Track of Vettes* magazine, May 1990.

Long Live the King!: An essay paying homage to the ZR-1 by Peter Cook, ©1997

Save the Wave: An interesting essay from "Corvette News", a FREE publication sent out by Chevrolet to Corvette owners. "Save the Wave", appeared in the August/September 1969, Volume 12, Number 6.

The 10-Second Trip: This reprint form Motor Trend, October 1969 tells about one of the hottest drag car of the '60's, the ZL 1 super 'Vette.

Sometimes You Just Get Caught Up In the Moment: A short story we all should read by Peter Cook.

Corvette Magazines

Gives subscription details and phone numbers for the following Corvette magazines:

Corvette Capers
Corvette Fever
Corvette Journal
Corvette Magasinet
Corvette Quarterly
Corvette Restorer Magazine
Corvette & Chevy Trader
For Vettes Only
Shark Quarterly
The Yankee Lady Gazette
Vette Magazine
Vette Vues
Y-Car On-Line

Artwork

This section showcases the work of the following talented artists.

Hugo Prado

National Corvette Museum and Chenault & Company

Scott Jacobs

Literature

[Corvette Articles](#)

Corvette Books

A list of books available on-line from Amazon.com in association with HI-Tech Software.

Corvette Catalogs

A list of mail order catalogs specializing in Corvette parts, clothing, memorabilia etc.

[Corvette Magazines](#)

Miscellaneous

Glossary

A list of Corvette related terms with definitions or descriptions of each.

Corvette Engines

Lists every Corvette engine from the first 6-cylinder of 1953 to the newest 1998 LS1.

Corvette Museums

Provides photos, information and descriptions about the two major Corvette museums:

Corvette-Americana Hall of Fame
The National Corvette Museum

Corvette Timeline

A Chronology of Events in the History of Chevrolet Corvettes by Ken Polsson

EMAIL: kpolsson@islandnet.com

WEB: <http://www.islandnet.com/~kpolsson/vettehis.htm>

Corvette Identification Guide

This handy feature is a guide to help you identify the various year Corvettes and distinguish them from each other. It can be printed out and taken with you to Corvette shows and events.

Top Ten Corvette People

This is a reprint from the Corvette Quarterly magazine Special Collectors Edition, 1997. Featured are photographs and narratives paying homage to the men who many feel are the ten most important people responsible for the Corvette.

Corvette Stuff

Drive That Corvette Calendars

Car Stuff

10050 Montgomery Road #234
Cincinnati, OH 45242
1-800-934-9686 orders
1-513- 469-1645 (fax)
WEB: <http://www.cstuffacc.com>
EMAIL: lblake2498@aol.com

Corvette Collector Knives

Corvette Collector Plates

Die cast Corvette Models

The Franklin Mint Precision Models

Franklin Center, PA 19091-0001
1-800-843-6468

Metal Signs

These Corvette Metal signs and over 700 different other tin signs and products including refrigerator magnets, paper posters, canning tins, sepia-toned photographs, and light switch plates are available from:

Desperate Enterprises

620 East Smith Road #E-8
Medina, Ohio 44256
(800)732-4859
WEB: <http://www.desperate.com>
EMAIL: tinsigns@apk.net

Pinball Machine

It's an American art form. A singular entertainment attraction that has endured for more than sixty years, captivating people of all ages the world over. Today, more popular than ever, the venerable pinball machine has undergone a dramatic metamorphosis due in no small measure to the adaptation of state-of-the-art technology. Here it is married to another all American art form, the Corvette.

Midway Manufacturing Company

3401 North California Avenue
Chicago, IL 60618
312 267 2240
FAX 312 267-8435

Contact: Roger Sharpe
312-961-1000

Postage Stamps

Identifying information and photos about all known postage stamps from around the world that commemorate the Corvette.

Specialty

Callaway C12 - Newest Offering Based on the Fifth-Generation Corvette is the First All-New Callaway Corvette in 11 Years

Callaway Twin Turbo - Important information about the special Callaway Corvette performance conversion option available from 1987 through 1990.

Gisser Automotive Concepts - The Corvettes of Gisser Automotive Concepts are represented here.

Malibu Corvette Limited Edition Ski Boat - Detailed information describing the Corvette inspired Callaway powered performance ski boat.

Lingenfelter Cars - The Corvettes of Lingenfelter Performance Engineering are represented here.

Prototypes and Race Cars - Included here are many examples of the Corvette prototypes and race cars that were produced over the years to test the various technical and design aspects of America's favorite sports car.

ZR-1 - Everything you want to know about the Chevrolet special performance ZR-1 package available from 1990 through 1995.

Help

Contents - Call this Help file.

What's New - A listing of the many additions and improvements included in this version of the Corvette Anthology.

Introduction - Presents a narrative depicting the history of the Corvette from its inception in the early 1950's to the present.

Notice - Legal stuff.

Credits - Acknowledgements for the contribution from others that made this work possible.

Contributions - Information on how to contribute photographs, literature or anything else Corvette related for future versions of the Corvette Anthology software.

About - Presents a screen identifying this software and the author.

System Info - Analyzes your system's status and produces a report detailing the results.

File

Copy CDROM Photos

CDROM drives are inherently slow (at least compared to hard drives) at transferring data to the computer. The many high quality photographs contained in the **Corvette Anthology** CDROM may not be displayed on your screen as quickly as you would like. This is because they are fairly large files, necessary to maintain detail and quality. In order to alleviate this problem, a facility to copy the photos from the CDROM to your hard disk has been provided. The only drawback is the space that these pictures require. (Approximately 150 megabytes). You will be prompted if you do not have enough available space. Once the photos are copied, performance is than dramatically improved.

Remove Photos from hard drive

This will erase the Corvette photographs that you have previously copied to your hard drive. Once the photos have been removed, you will have to exit the **Corvette Anthology** and re-enter to allow the software to recognize the cdrom as the source or the photos. You will also have to re-install the **Corvette Anthology** Screen Saver if it was previously installed.

Install the Corvette Anthology Screen Saver

You may install the **Corvette Anthology** Screen Saver to use all the photos from the **Corvette Anthology** library or just the ones that you have selected from the Screen Saver Photo Selection form. You may access this form by clicking the right mouse button on the desired photo when it is displayed on the main screen. This form allows you to add or remove a photo from the list or remove all photos. If you remove all photos, remember to re-install the Screen Saver and choose the Select All Photos option.

If you choose to include all the photos, you may want to improve performance by copying the photos from the **Corvette Anthology** CDROM to your hard drive. If this has not already been done, the Install process will inform you and give you the opportunity to do so. Follow the instructions that will be presented. Keep in mind, though, that this will require approximately 150 meg of hard drive storage. You may, if you like, continue without copying the photos to your hard drive

To improve performance of the **Corvette Anthology** Screen Saver, the Corvette photos should be copied from the **Corvette Anthology** CDROM to your hard drive. If this has not already been done, the **Install** process will inform you and give you the opportunity to do so. Follow the instructions that will be presented. Keep in mind, though, that this will require approximately 150 meg of hard drive storage. You may, if you like, continue without copying the photos to your hard drive

After the Corvette Anthology Screen Saver has been installed you must activate it.

To do this follow these steps:

- 1) Click the **Start** button on the Windows desktop
- 2) Click the **Settings** button
- 3) Click on **Control Panel**
- 4) Double click on the **Display** icon
- 5) Select the **Screen Saver** tab
- 6) Click the dropdown arrow to the left of the **Settings** button
- 7) Select **VETTE99**
- 8) Click **OK**

You may set the time delay between photos as desired by selecting the interval before clicking the **Install** button. This process may be done as often as you like.

Install the Intel Indeo® Software

If you are experiencing any difficulties running the Corvette movies, you may need to install the **Intel Indeo® Software**. These video drivers are provided by Intel to allow the latest in multimedia experience. To install these drivers on your machine select this option. The software will self-install.

Print Photo

The **Corvette Anthology** can print the photo being displayed. Use the **Print Setup** option to select the desired printing methods according to the capabilities of your printer: color, b&w, high resolution etc. Then select the **Print Photo** menu option.

Print Booklet

The **Corvette Anthology** can print a booklet containing most of the text information included on the CDROM. Several options are presented allowing you to build your booklet all at once or piece by piece. The information is grouped by year just like the CDROM. Pick and choose what you want in your booklet.

Print Setup

Presents standard Windows printer setup screen. Use to select printer or print options.

Show File Names

Click this to show/hide the file names of the Corvette photos. Use this to help identify any photographs that you may want to copy for personal use. Keep in mind that all photos are copyrighted and may not be used commercially.

Exit

Help file generated by VB HelpWriter.

